

# True On Line Double Conversion Design

Uninterruptible Power Supply



Complete Power Solution™

## ONL-LCD Series

### Advanced Power Protection for Enterprise Network



#### Single-phase Model

ONL 3750-LCD:	3.75kVA
ONL 6250-LCD:	6.25kVA
ONL 7500-LCD:	7.5kVA
ONL 10K-LCD:	10kVA
ONL 15K-LCD:	15kVA

#### Three-phase Model

ONL 10K31-LCD:	10kVA
ONL 15K31-LCD:	15kVA
ONL 20K31-LCD:	20kVA

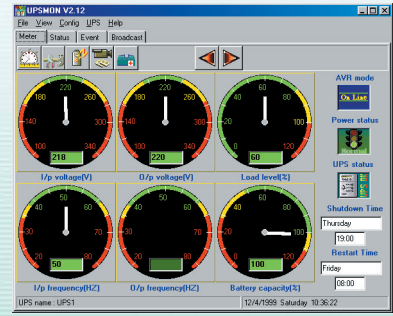
#### High Performance Features

- Multi-microprocessor Control
- True On-line Double Conversion Design
- IGBT Inverter Design
- Sinewave Pulse Width Modulation (SPWM)
- 20kHz SPWM High Frequency Inverter
- Wide Input Voltage Range  $\pm 25\%$  of Nominal
- Pure Sinewave Output less than 3% THD
- Overload, Short Circuit, Surge and Spike Protection
- On-line, Battery and Overload etc. Status LED
- Load and Battery Power Meter Display
- Advanced Battery Management (ABM)
- Automatically Charging in UPS Off Mode
- Cold Start (DC power on)
- Static Transfer Switch
- Expandable Battery Run Time
- "UPSMON" UPS Monitoring and Controlling Software
- Smart RS232 Communication Port
- SNMP Management Capability
- Versatile, Modular Design
- Generator Compatible
- Manual Bypass Switch (Option)



- Real-time Graphic Display by Meter
- Back Up, On-line, Battery and Power Status Display
- Automatic UPS and System Shutdown
- Scheduled UPS and System Shutdown/Reboot
- UPS Notification of Power Events
- History Record of Power Failure Events
- Power Quality Data Log
- Support Windows NT/2000 Service and before user log in under Windows 95/98
- Compatible with Windows 95,98/NT/2000 and Novell etc.

# ONL-LCD Series



**UPSMON Plus**  
UPS & Power Monitoring and Controlling Software

## ONL-LCD Series Technical Specifications

Tower Model		ONL 3750-LCD	ONL 6250-LCD	ONL 7500-LCD	ONL 10K-LCD	ONL 15K-LCD	ONL 10K31-LCD	ONL 15K31-LCD	ONL 20K31-LCD	
Power Rating		3.75kVA	6.25kVA	7.5kVA	10kVA	15kVA	10kVA	15kVA	20kVA	
Input	Voltage	220Vac ± 25%					380/400/415Vac ± 25%			
	Phase	Single-phase					Three-phase			
	Frequency	50/60Hz ± 10%								
Output	Voltage, phase	220Vac, single-phase								
	Frequency	50/60Hz								
	Voltage regulation	± 1%								
	Frequency, stability	± 0.1%								
	Transient response	± 4% for 100% instantaneous load variation recovery to ± 1% of rated voltage within 2 ms.								
	Power factor	0.8 lag to 0.8 lead								
	Harmonic distortion	<3% of T.H.D. at linear load								
	Overload detection	150% for 30 seconds								
	Crest factor ratio	3:1								
	Inverter Operation	SPWM (Sinewave Pulse Width Modulation)								
Battery	DC Voltage	192Vdc							360Vdc	
	Type	Sealed maintenance-free lead acid								
	Back up time	15 minutes								
	Expansion back up time	Optional								
	Recharge time	8 hours to 90% after fully discharged (other requirements are available)								
	Protection	Cut off without draining any current when battery low								
Transfer	Power failure or recovery	0 ms								
	Overload disappear	Auto transfer to UPS								
	Bypass	Uninterrupted transfer of 100% load from UPS to bypass or vice versa								
Efficiency	Whole	>85%								
	Inverter	>90%								
Interface	Support both RS-232 & dry contact signal	Provide power management & diagnostic functions including power status, battery low, schedule UPS on/off, battery/load level display and more. Compatible with Windows 95/98/NT/2000, Novell, Unix and other popular system. (included UPSMON software compatible with Windows 95/98/NT/2000 and Novell, etc.)								
LCD Indicators	Status	Indicate line, bypass, inverter, backup, fault, battery capacity, load capacity, I/P voltage, I/P frequency, O/P voltage, inside temperature and fault status etc.								
Alarm	Battery discharge	The first warning will beep every 4 seconds to indicate battery in use. The second warning will beep every 1 second to signal battery low condition.								
	UPS fault	Continuous beeping sound								
Noise Level	1m. distance	<40dBA				<45dBA				
Environment	Temperature	0~45°C								
	Humidity	0~95% (non condensing)								
Physical Size	WxDxH (mm)	265x641x773				350x641x1010				
Weight	Net Weight (kgs, without batt.)	117 (with batt.)	90	160	167	175	167	175	215	

All brands and logos are registered trademarks of their respective owners.  
Specifications are subject to change without notice.
















**Powermatic Co., Ltd.** Tel: 0-2952-4400 Fax: 0-2952-3899 e-mail: sales@powermatic.co.th www.powermatic.co.th

Authorized Distributor:  
**PowerMatic™**  
 power quality solution