

Line Interactive with Stabilizer Design

Uninterruptible Power Supply



Complete Power Solution™

SMART KING

Pure Sine Wave Output for any Critical Load



Tower Model

SMK-600A:	600VA
SMK-1000A:	1kVA
SMK-1250A:	1.25kVA
SMK-1500A:	1.5kVA
SMK-2000A:	2kVA
SMK-2500A:	2.5kVA
SMK-3000A:	3kVA

19" Rack-mount Model

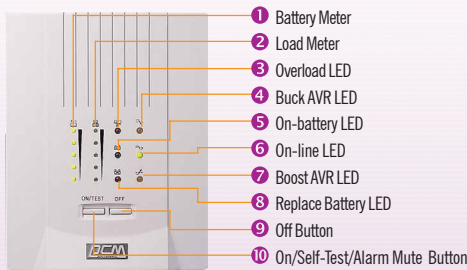
SMK-600A RM:	600VA
SMK-1000A RM:	1kVA
SMK-1250A RM:	1.25kVA
SMK-1500A RM:	1.5kVA
SMK-2000A RM:	2kVA
SMK-2500A RM:	2.5kVA
SMK-3000A RM:	3kVA

High Quality Features

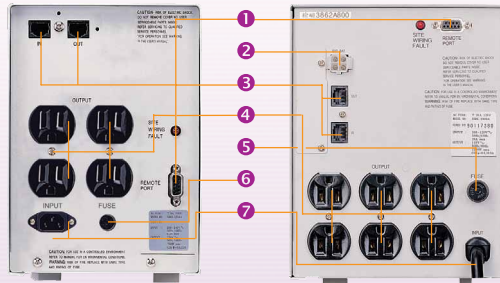
- Line Interactive with Stabilizer Design
- 100% Digitized Microprocessor Controlled
- Pure Sine Wave Output
- Automatic Voltage Regulator for Boost & Buck ($\pm 25\%$)
- Energy Saving (noload shutdown: UPS sleep mode)
- Advanced Battery Management (ABM)
- AC and DC Start System
- Lightning and Surge Protection
- EMI/RFI Noise Filter
- Short Circuit and Overload Protection
- Automatically Charging when UPS off
- Automatic Self-test (diagnostic and battery check)
- On-battery LED Display
- Battery Replacement LED Display
- Boost and Buck LEDs Display
- Overload, On-line and Battery Status LEDs Display
- Load and Battery Power Meter LEDs Display
- Hot Swappable Battery, User Replaceable
- Extended Back Up Time with Battery Pack
- LAN/TEL/Modem/Internet Surge Suppression
- SNMP Management Capability
- Smart RS232 Communication Port
- USB Communication Port (option)
- "UPSMON" UPS Monitoring and Controlling Software



- Real-time Graphic Display by Meter
- Back Up, On-line, Battery and Power Status Display
- Automatic UPS and System Shutdown
- Scheduled UPS and System Shutdown/Reboot
- UPS Notification of Power Events
- History Record of Power Failure Events
- Power Quality Data Log
- Support Windows NT/2000 Service and before user log in under Windows 95/98
- Compatible with Windows 95/98/NT/2000/XP, Novell and Linux etc.



Front



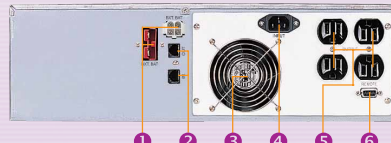
Rear
(SMK-600A and 1000A)

Rear
(SMK-1250A, 1500A, 2000A, 2500A and 3000A)

- 1 Communication Port
- 2 External Battery Connector (optional)
- 3 LAN/Tel/Modem Surge Protection Port
- 4 Outlets
- 5 Fuse
- 6 Circuit Breaker
- 7 AC Input



SMART KING 19" Rack-mount Model



Rear (19" Rack-mount)

- 1 External Battery Connector (optional)
- 2 LAN/Tel/Modem Surge Protection Port
- 3 Cooling Fan
- 4 AC Input
- 5 Outlets
- 6 Communication Port



UPSMON Plus

UPS & Power Monitoring and Controlling Software

SMART KING Technical Specifications

Tower Model		SMK-600A	SMK-1000A	SMK-1250A	SMK-1500A	SMK-2000A	SMK-2500A	SMK-3000A
19" Rack-mount Model		SMK-600A RM	SMK-1000A RM	SMK-1250A RM	SMK-1500A RM	SMK-2000A RM	SMK-2500A RM	SMK-3000A RM
Power Rating		600VA	1kVA	1.25kVA	1.5kVA	2kVA	2.5kVA	3 kVA
Input	Voltage, phase Frequency	220Vac ±25% at line input, single phase 50Hz ±10%						
Output	Voltage Frequency (on battery) Voltage regulation (AVR)	Pure sine wave at 220Vac ± 5% 50Hz ±0.1% 220Vac ±10%						
Protection and Filtering	Spike protection Unit input EMI/RFI filter Overload protection Short circuit Transfer time 10Base-T cable port	320 Joules, 2 ms Fuse or breaker for overload and short circuit protection 10dB at 0.15MHz, 50dB at 30MHz UPS automatic shutdown if overload exceeds 110% of nominal at 20 seconds and 125% at 2 seconds UPS output cut off immediately or input fuse (or breaker) protection 2 milliseconds, including detection time Network (UTP, RJ-45) compatible jacks						
Battery	Type Typical recharge time Protection Back up time	Hot swappable, sealed maintenance-free lead acid 4 hours (to 90% of full capacity) Automatic self-test & discharge protection, replace battery indicator 15~30 minutes (depending on computer load)						
LEDs Indicators	Status Battery capacity level Load level	On-line (green), On-battery (amber), Buck AVR (amber), Boost AVR (amber), Overload (red) and Replace battery (red) 5 green LEDs 5 green LEDs						
Alarm	Battery back up Battery low Overload	Slow beeping sound (about 0.25Hz) Rapid beeping sound (about 1Hz) Continue beeping sound						
Interface	RS-232 or USB (option)	Bi-directional communication port (included UPSMON software compatible with Windows 95/98/NT/2000/XP, Novell and Linux etc.)						
Environment	Ambient operation Audible noise Storage condition	3,500 meters max. elevation, 0-95% humidity non-condensing, 0-48 °C <40dBA (1 meter from surface) 15,000 meters max. elevation						
Dimension (WxDxH, mm)	Tower 19" rack-mount	140x436x210 483x381x84			170x450x226 483x381x130			170x450x226 (2)* 483x531x130
Net Weight (kg)	Tower 19" rack-mount	13.8 15.7	15 20	15.8 23.5	25 26.1	30 28.4	30 28.4	20.5** 32.5
Standards and Approvals	Safety EMC - Emission - Immunity European directive	IEEE 587, EN50091 EN55022 CLASS A EN50082-1 (IEC 801-2, 3, 4, 5-draft) CE marked compliance LVD/EMC						

Specifications are subject to change without notice. All brands and logos are registered trademarks of their respective owners. * with external battery ** not including external battery pack

OUTPUT RECEPTACLE OPTION



Powermatic Co., Ltd. Tel: 0-2952-4400 Fax: 0-2952-3899 e-mail: sales@powermatic.co.th www.powermatic.co.th



Authorized Distributor:

